

GP-DiSolv® Non-Evaporative Solvent

DESCRIPTION: **GP-DiSolv®** is a new proprietary mixture of biobased ingredients specifically formulated for breaking down heavy organics in crude oil including paraffin wax and asphaltenes. These heavy organics diminish crude oil flow and pumping efficiency by sticking to the sides of flow lines and pumping equipment. **GP-DiSolv®** is a safe and effective product for removing paraffin from pipes, wellbores, processing equipment and storage tanks. The benefits of using **GP-DiSolv®** include increased storage capacities, improves overall production performance, lifecycle maintenance of equipment and greater recovery of crude oil deposits.



- OSHA 29-CFR Ch. XVII 1910.1200 and 40 CFR Ch. 1, Subparts C & D
- 48-hour LC₅₀ Crustacea: 183 mg/l
- 10-day LC₅₀ Amphipod: 4,769 mg/kg
- 72-hour EC₅₀ Algae: 210 mg/l
- 96-hour fish limit: >183 mg/l
- USDA BioPreferred® Program
- US DOT: Class 55, Liquid Cleaning Compounds

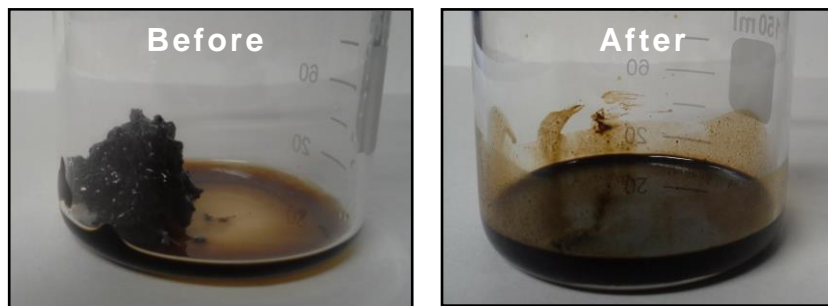
DiSolv® is considered:

- Non-toxic
- Non-flammable (157°F / 69°C Closed Cup)
- Non-carcinogenic
- Ultimately biodegradable
- Derived from renewable resources



INSTRUCTIONS: Typically, without the use of heat, **GP-DiSolv®** will soften and dissolve paraffin wax, asphaltenes and bitumen so that crude oil will flow more smoothly. And, equipment will not breakdown due to friction caused by wax build-up. Unlike most detergents and caustic reagents, **GP-DiSolv®** is safe to use on the formation, in the tubing/pipes and surface equipment. **GP-DiSolv®** makes the hot-oiling method more effective because it increases the solvency effects of the hot oil and holds the melted paraffin in solution even after the oil cools down. **GP-DiSolv®** may be introduced into a hot-oiling process at 100% concentration at a varying ratio of 0.5% to 5% of the crude oil volume depending upon the amount of paraffin and/or asphaltenes present. For well treatment, use ~10-gallons of **GP-DiSolv®** pumped into the casing annulus and allow to dwell for ~12 – 24 hours.

Note: Treatment process (temperature, concentration, dwell time, agitation) will vary for each well and/or region due to site conditions.



The information contained herein is believed to be correct. Users of **GEMTEK** products should perform their own test(s) to determine the suitability of the product for their specific application(s). See MSDS for additional information.

“Safely Cleaning Planet Earth®”